



# ERCC1 Polyclonal Antibody

<b>Catalog No</b>	YP-Ab-01699
<b>Isotype</b>	IgG
<b>Reactivity</b>	Human;Mouse
<b>Applications</b>	WB;IHC;IF;ELISA
<b>Gene Name</b>	ERCC1
<b>Protein Name</b>	DNA excision repair protein ERCC-1
<b>Immunogen</b>	The antiserum was produced against synthesized peptide derived from human ERCC1. AA range:141-190
<b>Specificity</b>	ERCC1 Polyclonal Antibody detects endogenous levels of ERCC1 protein.
<b>Formulation</b>	Liquid in PBS containing 50% glycerol, 0.5% BSA and 0.02% sodium azide.
<b>Source</b>	Polyclonal, Rabbit,IgG
<b>Purification</b>	The antibody was affinity-purified from rabbit antiserum by affinity-chromatography using epitope-specific immunogen.
<b>Dilution</b>	WB: 1/500 - 1/2000. IHC: 1/100 - 1/300. ELISA: 1/20000.. IF 1:50-200
<b>Concentration</b>	1 mg/ml
<b>Purity</b>	≥90%
<b>Storage Stability</b>	-20°C/1 year
<b>Synonyms</b>	ERCC1; DNA excision repair protein ERCC-1
<b>Observed Band</b>	36kD
<b>Cell Pathway</b>	[Isoform 1]: Nucleus .; [Isoform 2]: Cytoplasm . Nucleus .; [Isoform 3]: Nucleus .; [Isoform 4]: Nucleus .
<b>Tissue Specificity</b>	Cerebellum,Lung,Ovarian cancer,Uterus,
<b>Function</b>	disease:Defects in ERCC1 are the cause of cerebro-oculo-facio-skeletal syndrome type 4 (COFS4) [MIM:610758]. COFS is a degenerative autosomal recessive disorder of prenatal onset affecting the brain, eye and spinal cord. After birth, it leads to brain atrophy, hypoplasia of the corpus callosum, hypotonia, cataracts, microcornea, optic atrophy, progressive joint contractures and growth failure. Facial dysmorphism is a constant feature. Abnormalities of the skull, eyes, limbs, heart and kidney also occur.,function:Structure-specific DNA repair endonuclease responsible for the 5'-incision during DNA repair.,similarity:Belongs to the ERCC1/RAD10/SWI10 family.,subunit:Heterodimer composed of ERCC1 and XPF/ERRC4.,
<b>Background</b>	The product of this gene functions in the nucleotide excision repair pathway, and is required for the repair of DNA lesions such as those induced by UV light or formed by electrophilic compounds including cisplatin. The encoded protein forms a heterodimer with the XPF endonuclease (also known as ERCC4), and the



heterodimeric endonuclease catalyzes the 5' incision in the process of excising the DNA lesion. The heterodimeric endonuclease is also involved in recombinational DNA repair and in the repair of inter-strand crosslinks. Mutations in this gene result in cerebrooculofacioskeletal syndrome, and polymorphisms that alter expression of this gene may play a role in carcinogenesis. Multiple transcript variants encoding different isoforms have been found for this gene. The last exon of this gene overlaps with the CD3e molecule, epsilon associated protein ge

**matters needing attention**

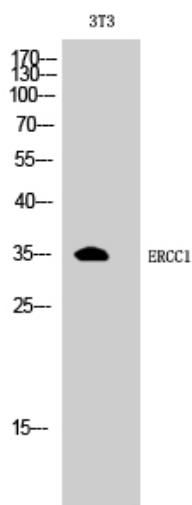
Avoid repeated freezing and thawing!

**Usage suggestions**

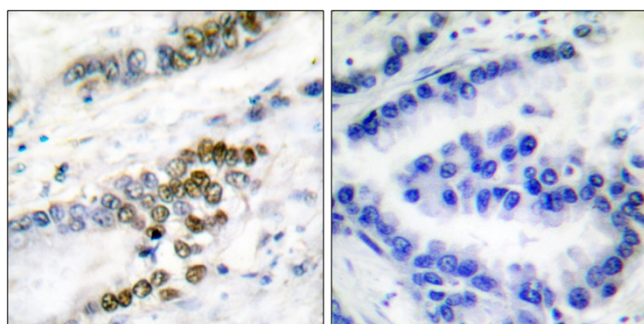
This product can be used in immunological reaction related experiments. For more information, please consult technical personnel.



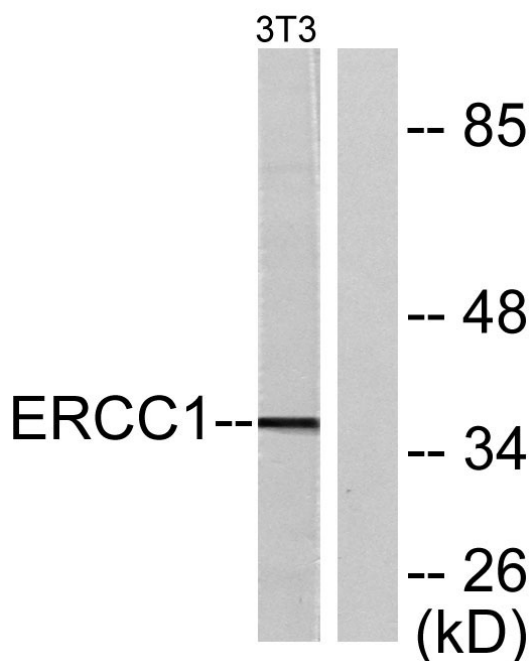
## Products Images



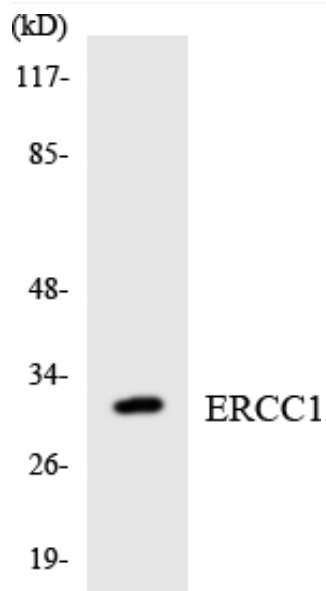
Western Blot analysis of 3T3 cells using ERCC1 Polyclonal Antibody cells nucleus extracted by Minute TM Cytoplasmic and Nuclear Fractionation kit (SC-003, Inventbiotech, MN, USA).



Immunohistochemistry analysis of paraffin-embedded human lung carcinoma tissue, using ERCC1 Antibody. The picture on the right is blocked with the synthesized peptide.



Western blot analysis of lysates from NIH/3T3 cells, using ERCC1 Antibody. The lane on the right is blocked with the synthesized peptide.



Western blot analysis of the lysates from HeLa cells using ERCC1 antibody.